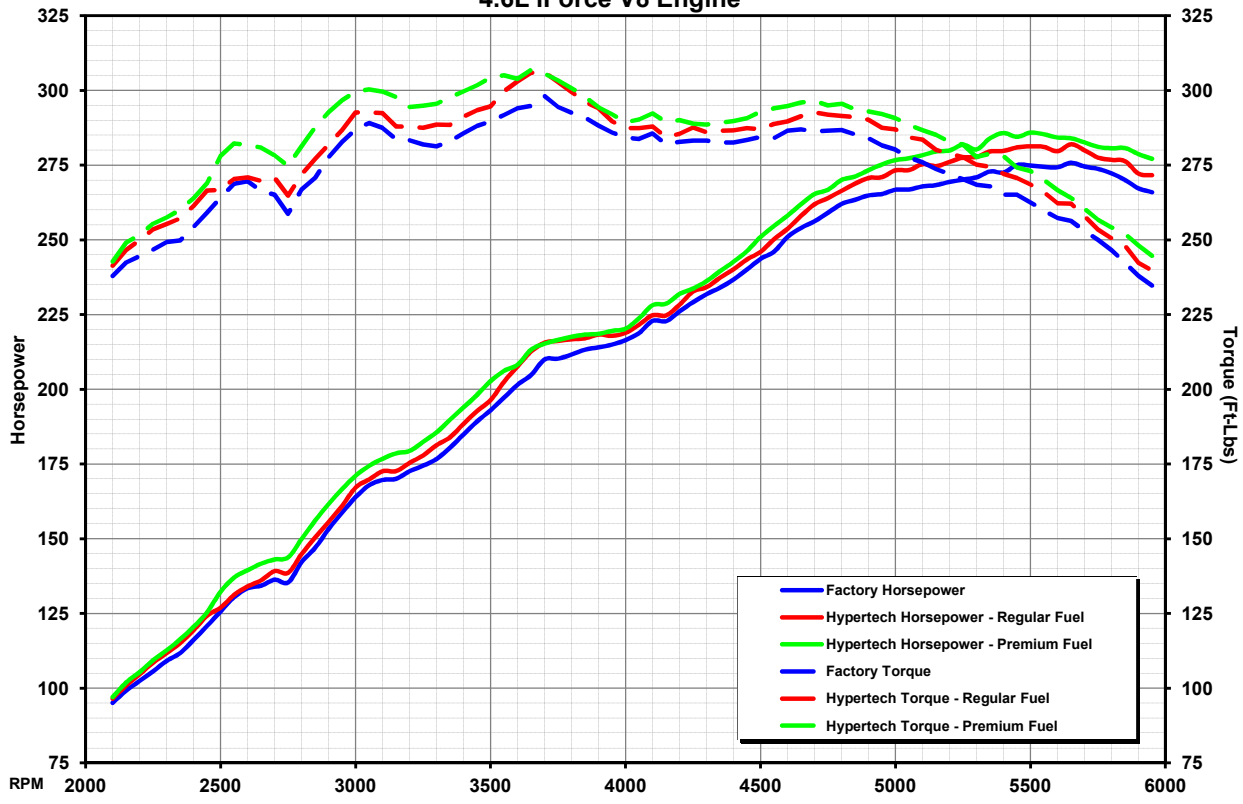


HYPERTECH DYNAMOMETER TEST RESULTS

2010-2013 Toyota Tundra, Sequoia, Lexus GX460
4.6L iForce V8 Engine



| Tuning | Horsepower | | Torque | |
|-------------------------------|-------------------|-------------------|-----------------------|-----------------------|
| | Maximum | Gain | Maximum | Gain |
| Hypertech Tuning Premium Fuel | 286 HP @ 5500 RPM | +13 HP @ 5400 RPM | 307 Ft-Lbs @ 3650 RPM | +17 Ft-Lbs @ 2850 RPM |
| Hypertech Tuning Regular Fuel | 282 HP @ 5650 RPM | +8 HP @ 3650 RPM | 306 Ft-Lbs @ 3700 RPM | +11 Ft-Lbs @ 3650 RPM |
| Factory Stock Tuning | 276 HP @ 5650 RPM | — | 298 Ft-Lbs @ 3700 RPM | — |

| RPM | Horsepower | | | |
|------|------------|----------------------------------|----------------------------------|--|
| | Factory HP | Hypertech Regular Fuel HP (Gain) | Hypertech Premium Fuel HP (Gain) | |
| 2100 | 95 | 97 (+2) | 97 (+2) | |
| 2500 | 126 | 127 (+1) | 132 (+6) | |
| 2850 | 147 | 150 (+3) | 156 (+9) | |
| 3000 | 164 | 167 (+3) | 171 (+7) | |
| 3500 | 193 | 196 (+3) | 203 (+10) | |
| 3650 | 205 | 213 (+8) | 213 (+8) | |
| 3700 | 210 | 216 (+6) | 215 (+5) | |
| 4000 | 217 | 219 (+2) | 220 (+3) | |
| 4500 | 244 | 246 (+2) | 251 (+7) | |
| 5000 | 267 | 273 (+6) | 277 (+10) | |
| 5400 | 273 | 280 (+7) | 286 (+13) | |
| 5500 | 275 | 281 (+6) | 286 (+11) | |
| 5650 | 276 | 282 (+6) | 284 (+8) | |
| 5950 | 266 | 272 (+6) | 277 (+11) | |

| RPM | Torque | | | |
|------|----------------|--------------------------------------|--------------------------------------|--|
| | Factory Torque | Hypertech Regular Fuel Torque (Gain) | Hypertech Premium Fuel Torque (Gain) | |
| 2100 | 238 | 241 (+3) | 243 (+5) | |
| 2500 | 264 | 267 (+3) | 278 (+14) | |
| 2850 | 271 | 277 (+6) | 288 (+17) | |
| 3000 | 287 | 293 (+6) | 300 (+13) | |
| 3500 | 290 | 295 (+5) | 304 (+14) | |
| 3650 | 295 | 306 (+11) | 307 (+12) | |
| 3700 | 298 | 306 (+8) | 306 (+8) | |
| 4000 | 284 | 287 (+3) | 289 (+5) | |
| 4500 | 284 | 287 (+3) | 293 (+9) | |
| 5000 | 280 | 287 (+7) | 291 (+11) | |
| 5400 | 265 | 272 (+7) | 278 (+13) | |
| 5500 | 263 | 269 (+6) | 273 (+10) | |
| 5650 | 256 | 262 (+6) | 264 (+8) | |
| 5950 | 235 | 240 (+5) | 245 (+10) | |

Tuning Features

- Automatically Optimizes Tuning for Regular and Premium Fuels On-the-Fly
- Part Throttle Tuning Improves Power Response and Drivability
- Improved Throttle Response Under All Driving Conditions
- Easy Plug-and-Play Installation with Factory Style Connectors (No Splicing)
- Untraceable After Uninstalling
- Fully Internet Updateable

Downloadable Tunes for Aftermarket Air Intakes

- | | | |
|---------------------------|---|--------------------------|
| AEM Brute Force Intake | AIRaid Air Intake System | RBP Air Intake System |
| AFE MagnumFORCE Stage 2Si | K&N 77 Series Air Intake (metal tube) | Volant Air Intake System |
| AFE MagnumFORCE Stage 2 | K&N 63 Series Air Intake (plastic tube) | Stock/Factory Air Intake |



3215 Appling Rd., Bartlett, TN 38133 www.Hypertech.com
(901) 385-1888 © Hypertech, Inc. 2013

Vehicle Tested: 2013 Toyota Tundra
Engine: 4.6L iForce
Transmission: 6-SPD AUTO
Gear Ratio: 3.91:1 LSD
Tire Size: 255/70R18
Test Date: 8/13/2013

Hypertech Part Number:
Max Energy Interceptor

706001