



EDELBROCK BELT TENSIONER BRACE
For 4.6L Ford V8 Engines
Part #15806
INSTALLATION INSTRUCTIONS

Please study these instructions carefully before installing your new tensioner brace. If you have any questions, do not hesitate to contact our **Technical Hotline at: (800) 416-8628** from 7:00 am to 5:00 pm, Monday through Friday, Pacific Standard Time.

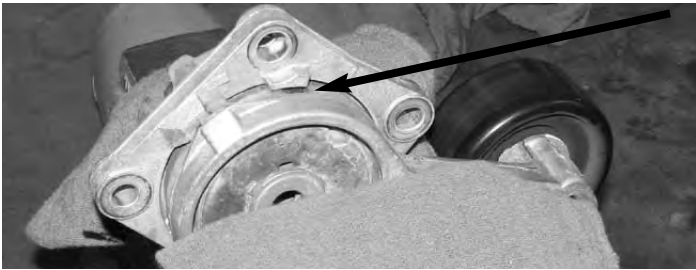
DESCRIPTION: This brace is designed to improve the durability of the stock serpentine belt tensioner on the 4.6L/5.4L Modular Ford V8 engines.

INSTALLATION:

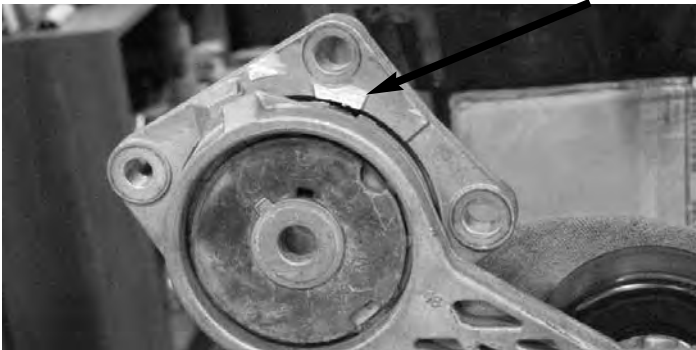
- 1. Use a 1/2" drive breaker bar to loosen the belt tensioner enough to slip off the serpentine belt.
- 2. Use a 10mm socket to loosen the three bolts that hold the tensioner in place and remove the arm.



- 3. Place the tensioner in a cloth wrapped vice and use a grinding wheel or hacksaw to remove the stop.



- 4. Use a grinding wheel or file to ensure that the area that was ground down is smooth and free of burrs.



- 5. Use a 10mm socket to install the three tensioner brace bolts, making sure to line up the square holes.



- 6. Use a 10mm socket to reinstall the tensioner.



Edelbrock LLC
2700 California St., Torrance, CA 90503
Tech Line: 1-800-416-8628
Office: 310-781-2222